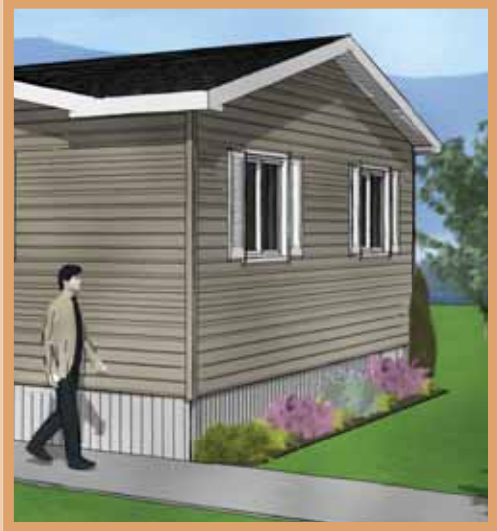
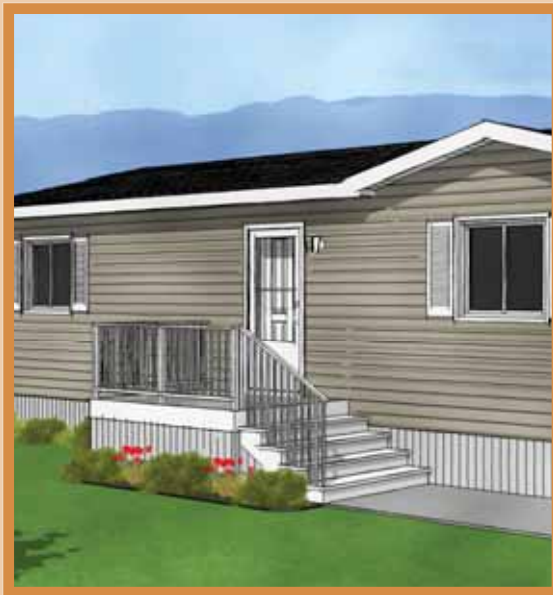


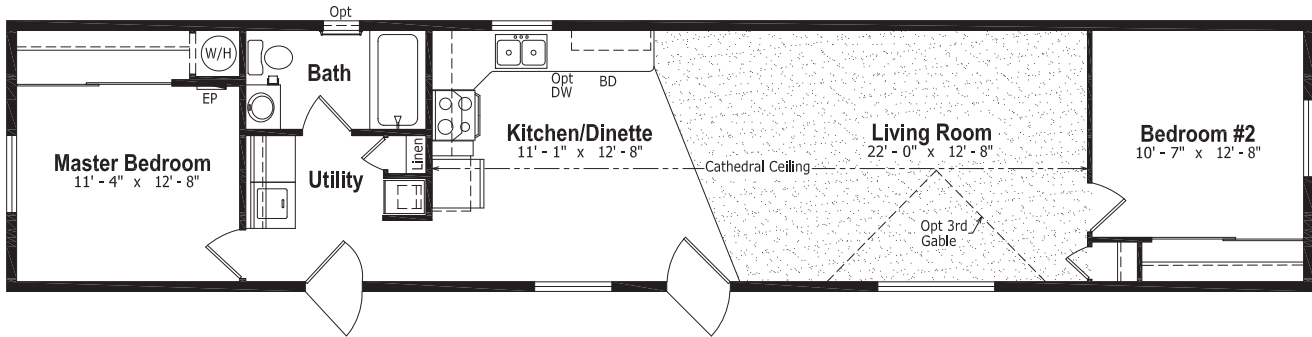
The Advent Series

Single Section and Sectional Homes

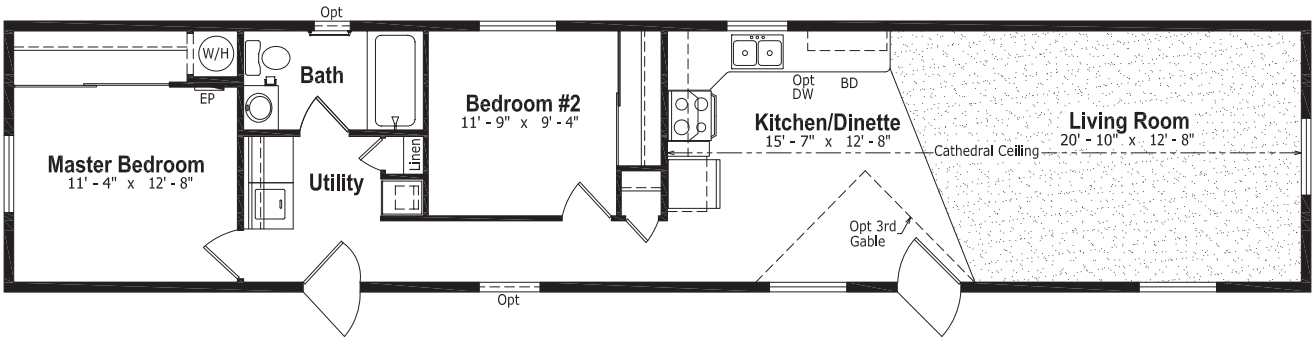


The Advent Series

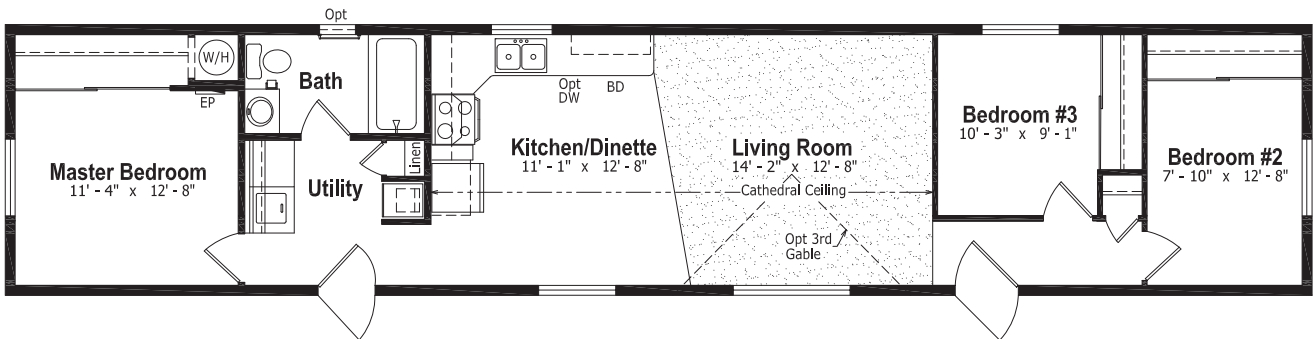
AS-2013, "The Amity" 14'x 66', 924 sq. ft.



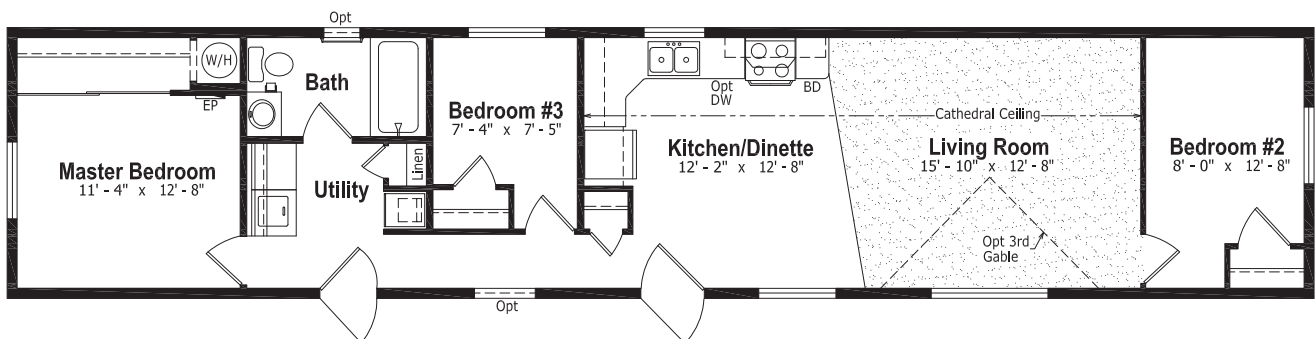
AS-2014, "The Allegra" 14'x 66', 924 sq. ft.



AS-2015, "The Arenal" 14'x 66', 924 sq. ft.



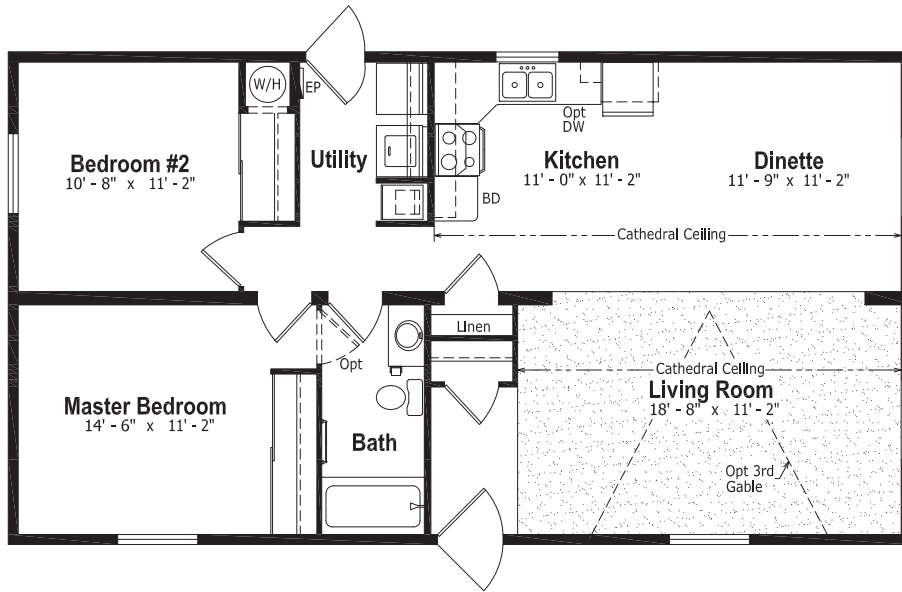
AS-2017, "The Augusta" 14'x 66', 924 sq. ft.



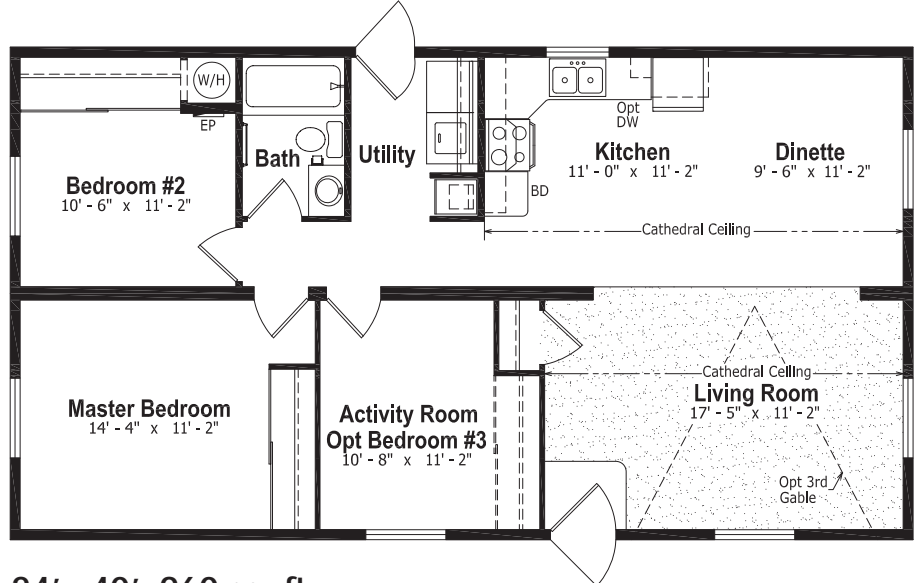
The Advent Series



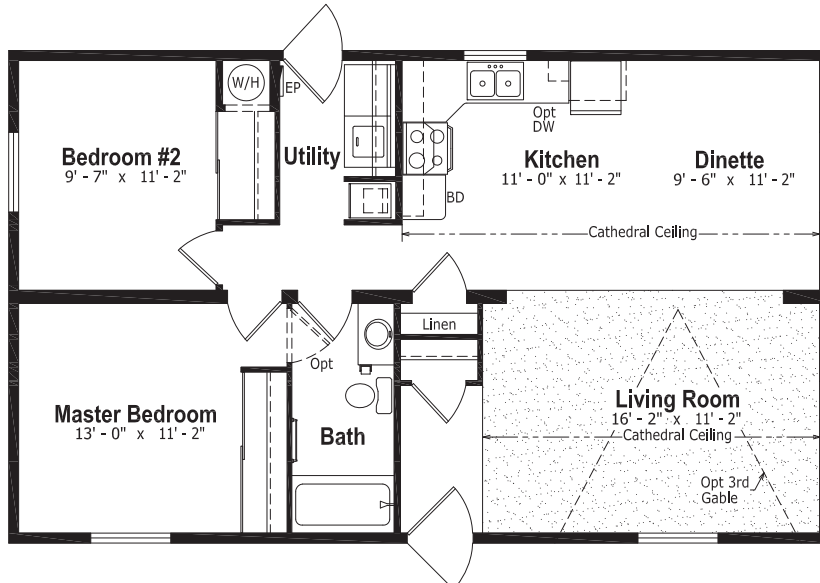
AD-2011, "The Athalia" 24'x 44', 1056 sq. ft.



AD-2012, "The Aurora" 24'x 44', 1056 sq. ft.



AD-2016, "The Avalon" 24'x 40', 960 sq. ft.



The Advent Series

Standard Features and Specifications

Exterior

- ★ Maintenance Free Vinyl Siding
- ★ Vinyl Trim on All Windows and Doors
- ★ Residential Roof Pitch with 16" Eaves on Sectional Homes
- ★ Fibreglass Shingles
- ★ Exterior Doors with Storm Doors
- ★ Coach Lights at each Exterior Door
- ★ Low E & Argon Gas Thermal Pane PVC Windows with Screen and Safety Latch
- ★ 2x6 Exterior Walls @ 16" o.c.
- ★ 5/8" Floor Sheathing - Screwed and Glued
- ★ 2x8 Floor Joists
- ★ Box Steel Frame with Detachable Hitch
- ★ G.F.I. Exterior Receptacle
- ★ Frost Free Exterior Tap
- ★ Poly Vapour Barrier
- ★ Heat Tape Receptacle

Interior

- ★ Cathedral Ceiling in Living Room, Kitchen and Dinette
- ★ Vinyl Covered Gyproc Decorative Wall Panels
- ★ Textured Ceilings
- ★ 2 contemporary Carpet Styles: "Repose" (Short Shag) or "Sprite" (Cut-Pile) in Living Room
- ★ Linoleum Elsewhere
- ★ Pewter Light Fixture Package
- ★ Light Bulbs in all Fixtures
- ★ Pewter Hardware Package
- ★ Wire Shelving Over Washer/Dryer Area and closets

Interior (Cont'd)

- ★ Traditional Drapery package with Venetian Blinds Through-out
- ★ Meets or Exceeds all Insulation Value Requirements for British Columbia

Kitchen

- ★ Brushed Nickel Single Lever Faucet with Sprayer
- ★ Rangehood with Two Speeds and Light, Vented to Exterior
- ★ Double Stainless Steel Kitchen Sink
- ★ Modular MDF Cabinets with Raised Panel & Designer Hardware
- ★ Deep Cabinet over Fridge
- ★ 6" x 12" Tile Backsplash

Bathroom

- ★ One Piece Tub and Shower with Brushed Nickel Single Lever Faucet
- ★ Dual Lever Vanity Faucets
- ★ Shower Liner and Rod in Bathroom
- ★ 6" x 12" Tile Backsplash
- ★ Exhaust Fan in Bathroom
- ★ G.F.I. Protected Receptacle in Bathroom
- ★ Privacy Lock on Bathroom Door

Utilities

- ★ 50 US Gallon Electric Water Heater
- ★ Natural Gas AC Ready Furnace with Electronic Ignition
- ★ Smoke Detector(s)
- ★ Plumbed and Wired for Washer and Dryer
- ★ Dryer Vent Kit
- ★ Built to meet or exceed CSA Z240 Code

Optional Features

Exterior

- Exterior Third Gable - 12'
- Armour Guard Eave Protection
- Turbine Vents
- 2x2 or 2x4 Skylights
- Upgraded Roof Snowloads
- 36"x36" Hall Window
- 21"x30" Bathroom Window
- Larger Window in Living Room
- Shutters

Interior

- Appliances
- Utility Room Door with Grill
- Washer and Dryer Cabinets
- Electric Furnace
- 40 Gallon US Convertible Gas Water Heater

Authorized Retailer:



9500 Jim Bailey Road Kelowna . BC . V4V 1S5
www.winfieldhomes.ca